

ST ANNE'S ECHO

05.02.24

Pupil Edition

THIS WEEK'S NEWS AT ST ANNE LINE CATHOLIC JUNIOR SCHOOL



JOKE TIME!

Why did the comma break up with the apostrophe during the GPaS test?

They just couldn't seem to get their points across!

What's a punctuation mark's favourite game during the GPaS test?

Comma and find me if you can!

Why did the math book look sad during assessment week?

Because it had too many problems!

Why did the grammar teacher bring a ladder to assessment week?

To help her students reach new heights in their understanding!

What did one multiple choice question say to the other during assessment week?

"Pick me! Pick me!"

Prodigious Production spreads like wildfire:

On Wednesday, whilst pupils were flooding into the hall, excitement was brewing within the crowd. Four, professional, actors taught us a lesson of kindness and purity! We, as a school, would definitely hope for them to return!



Mission Accomplished: Year 6 Students Assesstound with Academic Brilliance!

This week, children in Year 6 have been completing a number of assessments: GPAS, Arithmetic, Reasoning and Reading. The children have become fully engaged in their learning journey, striving to achieve their greatest potential. We, as a school, are incredibly proud of their perseverance and determination. Following these events, a pupil has told us that they are, although feeling nervous, proud of their growth and accomplishments.



KEEP
CALM

AND

DO YOUR BEST
ON THE TEST

This Wednesday, the Year 5/6 Boys Football Team went to Laindon Park and returned victorious with a jaw-dropping score of 20-0 (originally 21-0). The team's GK (goalkeeper) at the time, Gavriel Asare, mentioned: "It was a race against the clock, it was any man's match!"



13.02.24

Pupil Edition

Excel-Lent Week

In the past days, we have been commemorating the start of the Season of Lent by attending mass on Wednesday (Ash Wednesday).

Lent is the season that starts on the second Wednesday of February and marks the time when Jesus started his pilgrimage in the desert - where he prepared for Easter and his inevitable crucifixion. In the desert, Jesus came face to face with the Devil. Being the person he was, he didn't give in to the temptations the Devil presented.



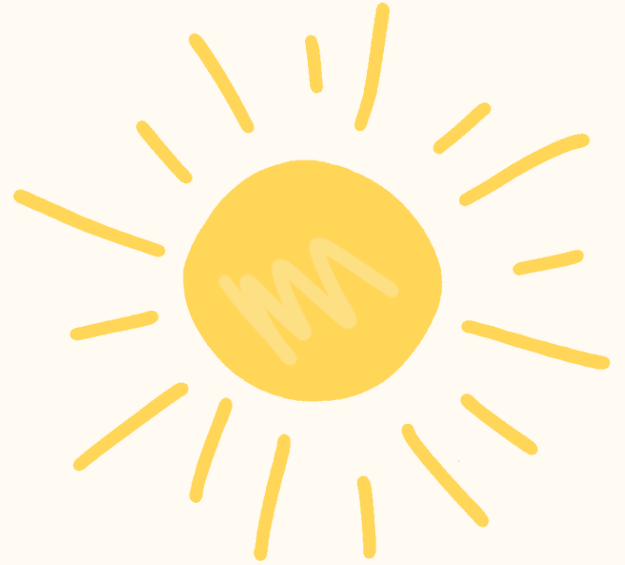
Tricky Trivia!

1. How many days does Lent last for?
2. Where did Jesus begin His pilgrimage?
3. Who did He encounter on his journey?
4. Did Jesus give in to the temptations?





HALF-TERM DATES:
19th - 23rd February
Back to school- Monday 26th
February



Dear Lord,
I pray to you above,
To help me live each day with love,
To be respectful when I play,
and speak with honesty in all I say,
Give me courage and the might,
To stand up for what's good and right ,
Help us show the true meaning of
equality,
And give us the dedication
to follow these values constantly.



AMEN

